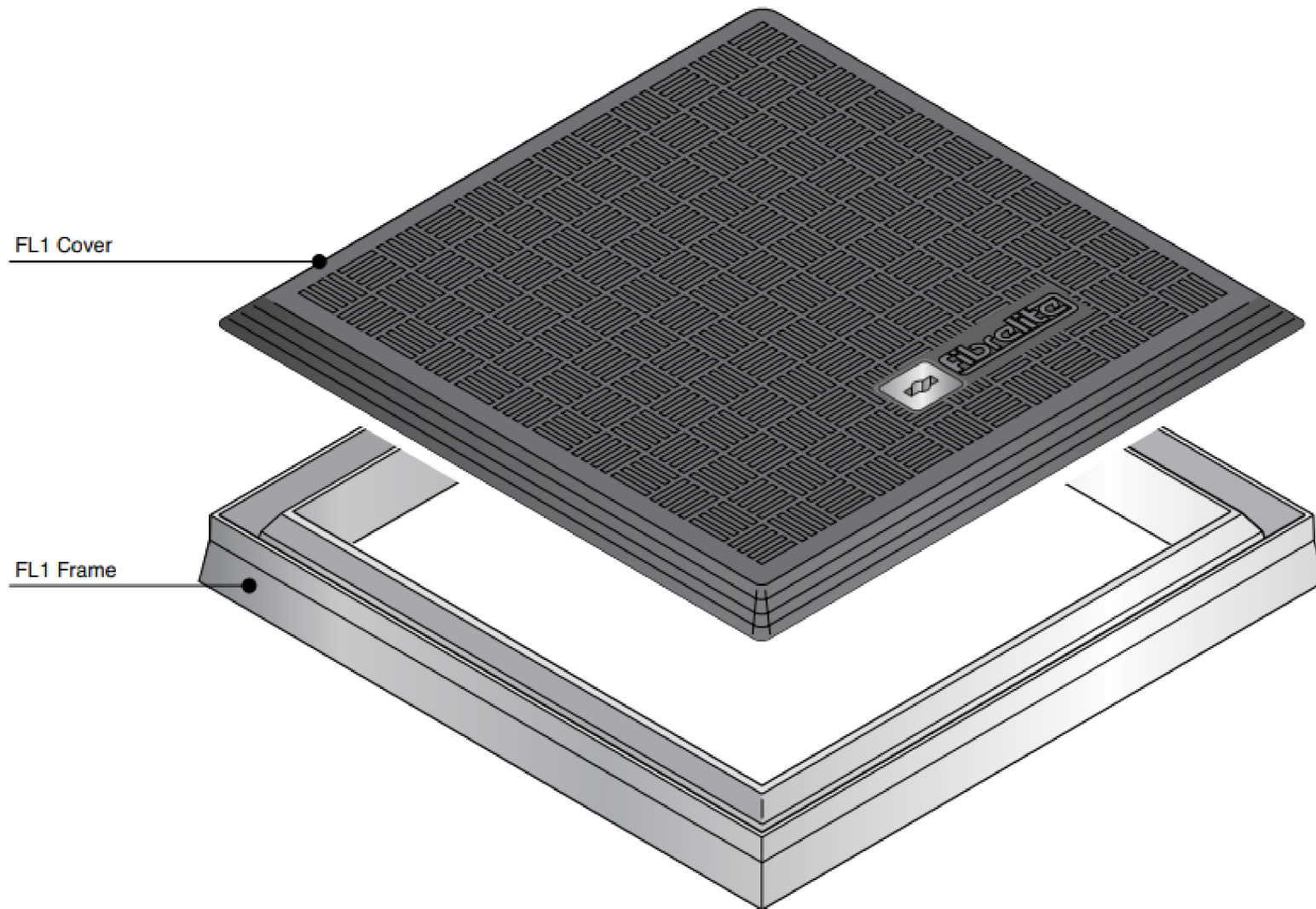
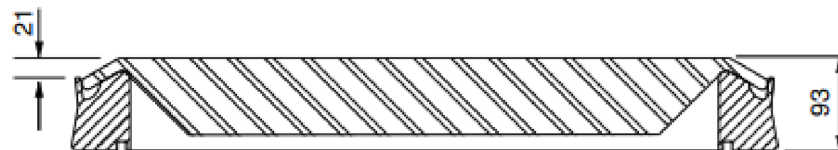
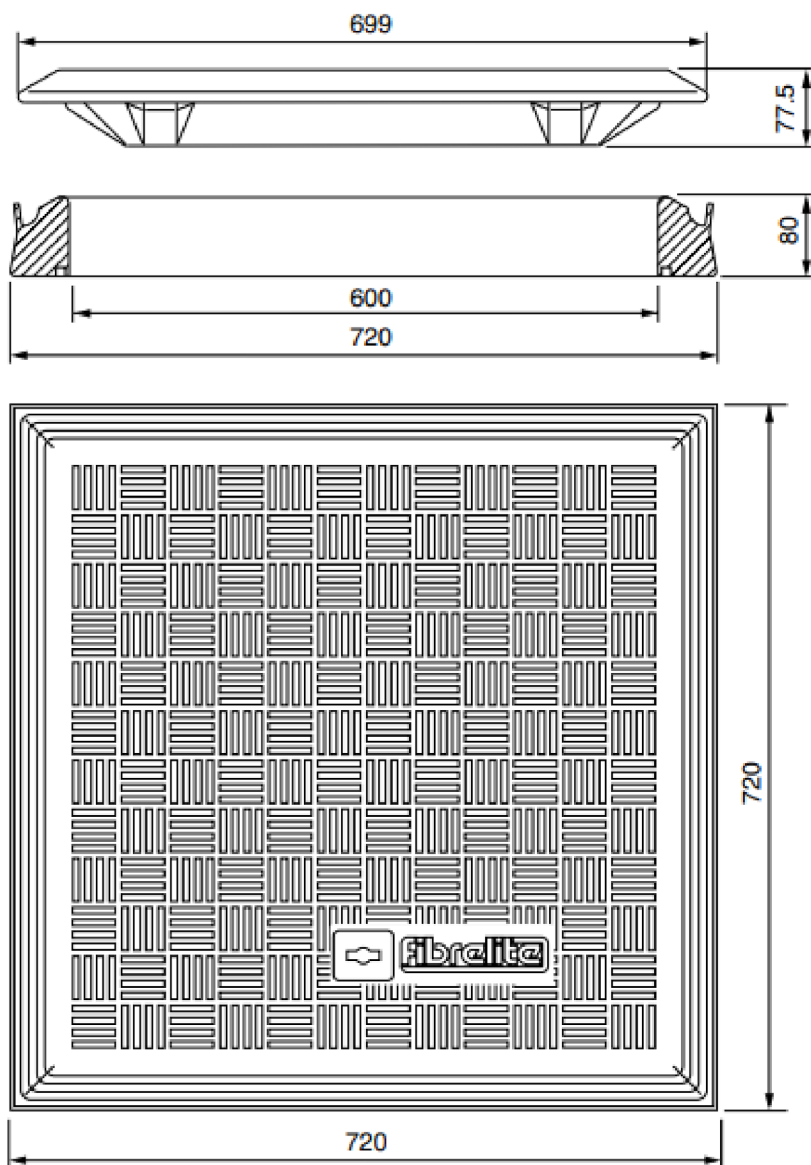


FL1





Load Rating	Cover Weight	Frame Weight
C250	20 kg	8 kg

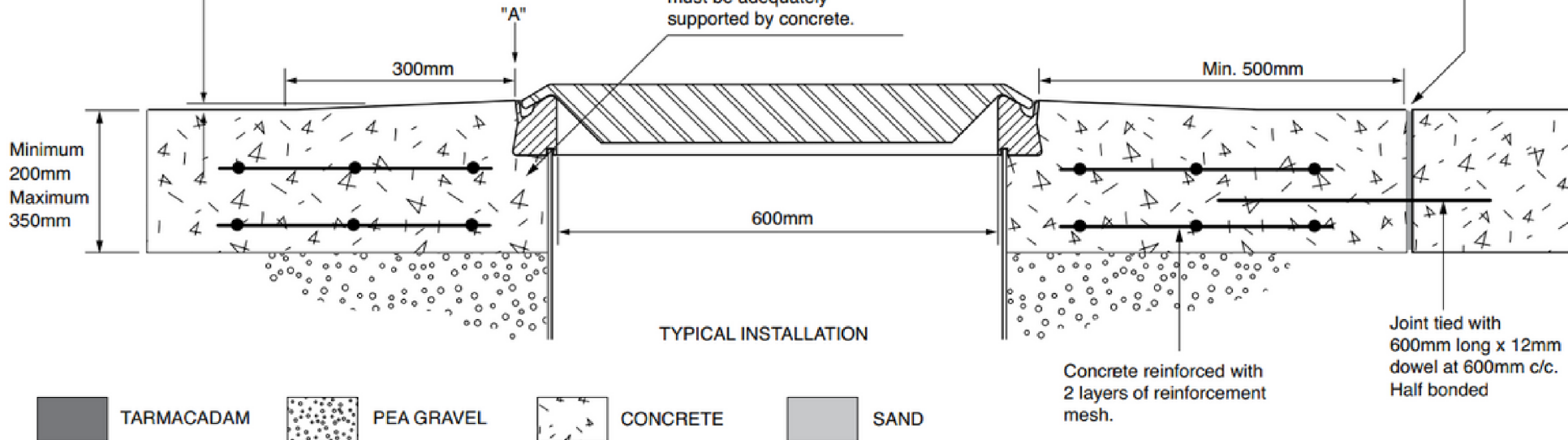
CONCRETE

VERY IMPORTANT

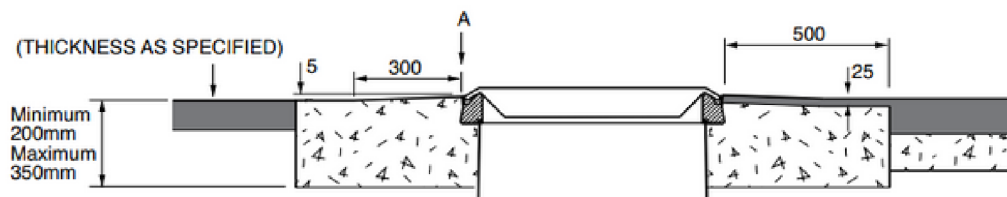
OUTER EDGE "A" OF FRAME SET 5 - 10MM ABOVE GENERAL FORECOURT AREA WITH CONCRETE RAMPED AWAY OVER 300MM.

VERY IMPORTANT
The underside of the frame must be adequately supported by concrete.

Expansion joint filled with petrol resistant mastic.



TARMACADAM



SETTS

