

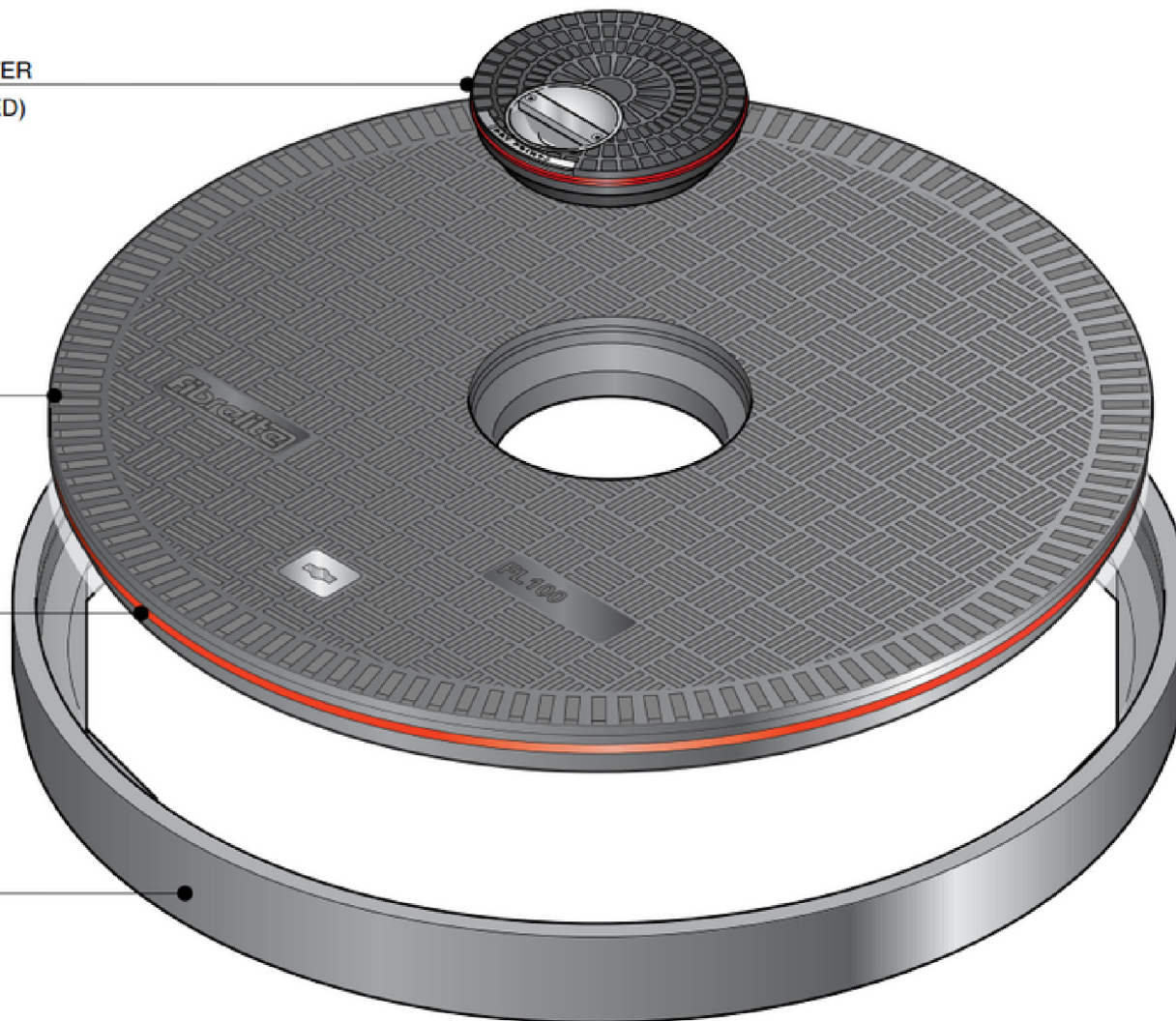
FL100-CF

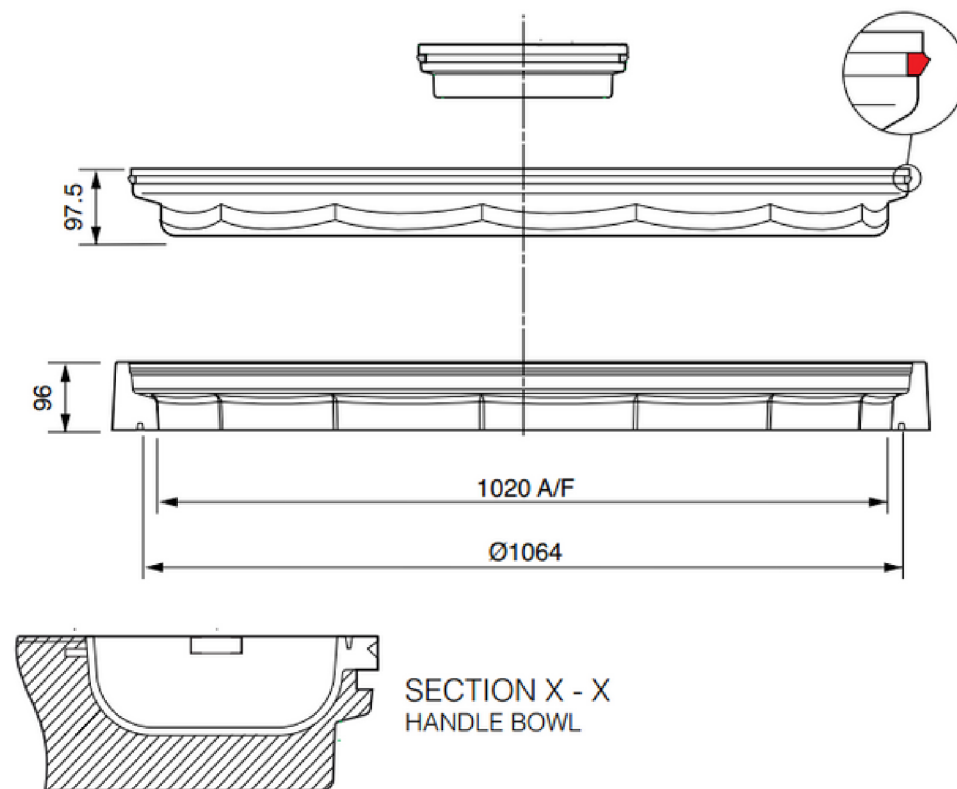
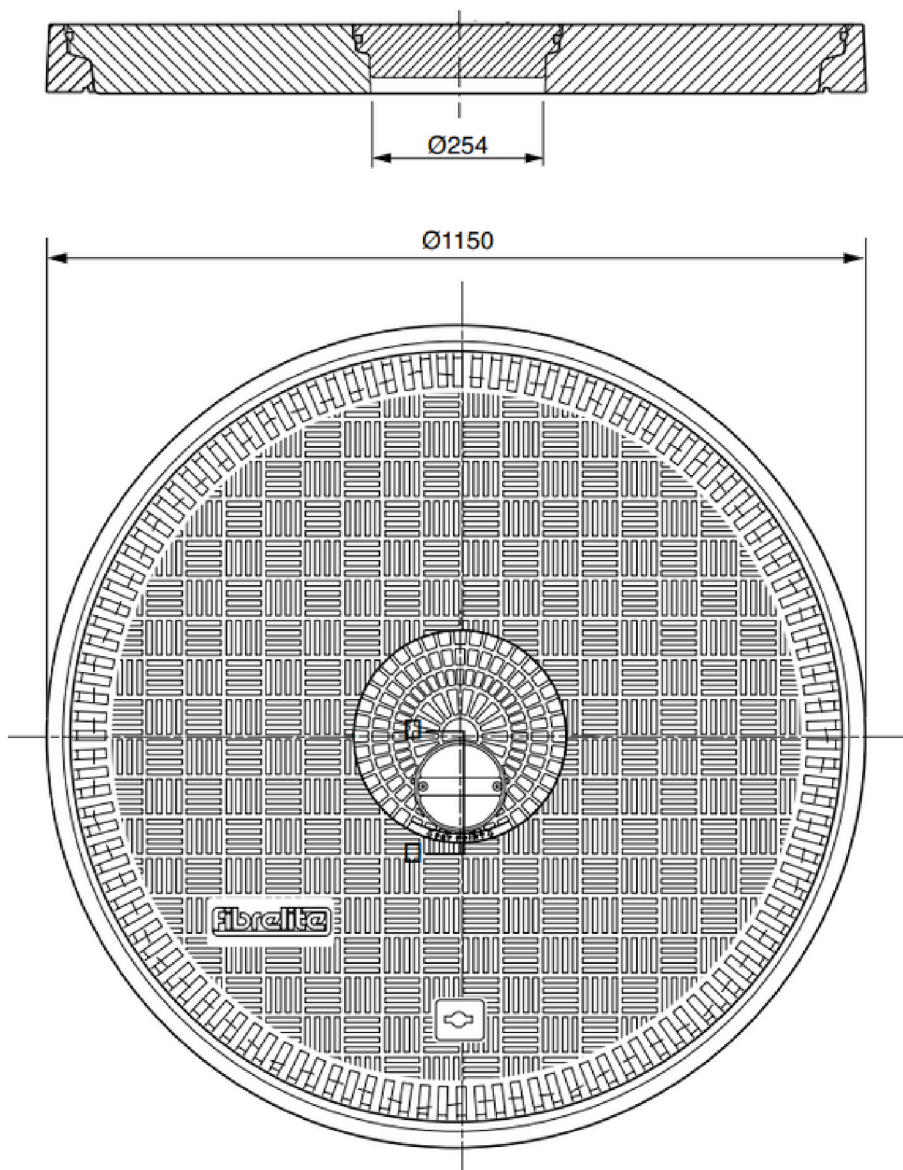
FC-254 SEALED PORT COVER
(AVAILABLE COLOUR CODED)

FL100-CF COVER

FL100 FRAME

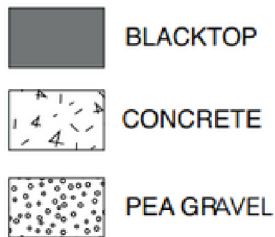
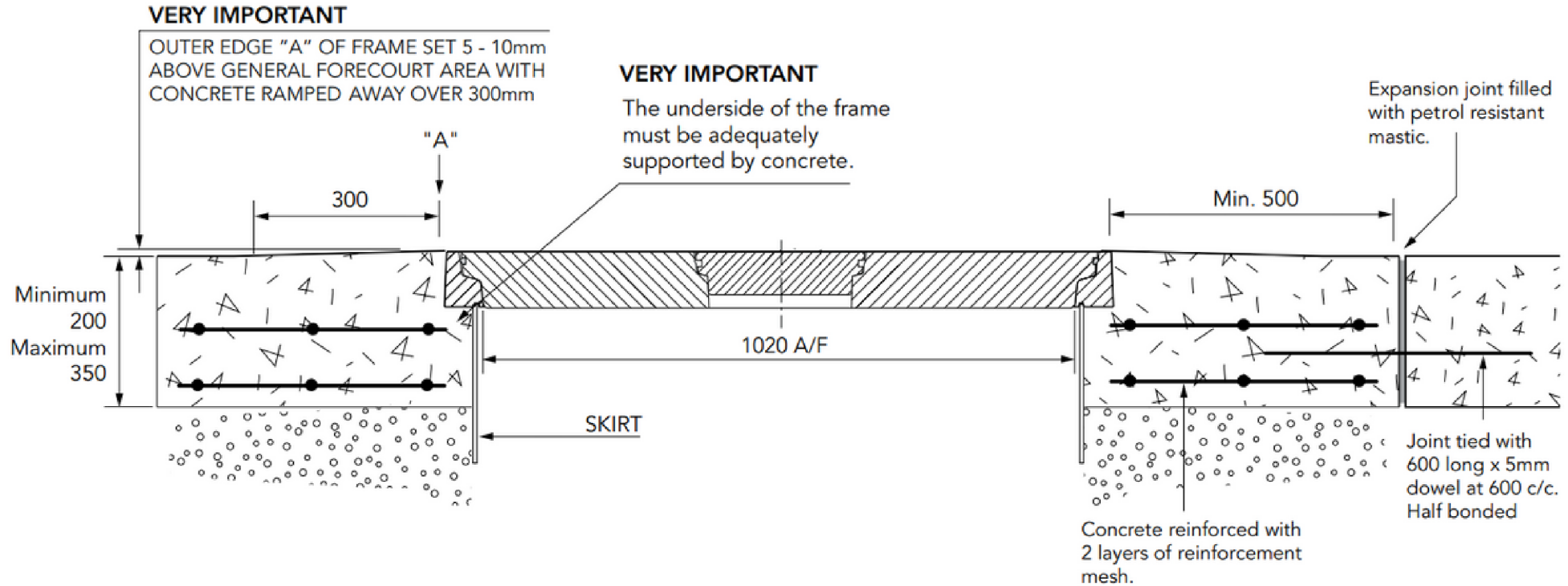
FL100 FRAME





Load Rating	Cover Weight	Frame Weight	Port Cover Weight
C250	49Kg	11Kg	3Kg
D400	55Kg	11Kg	3Kg

CONCRETE



TARMACADAM

