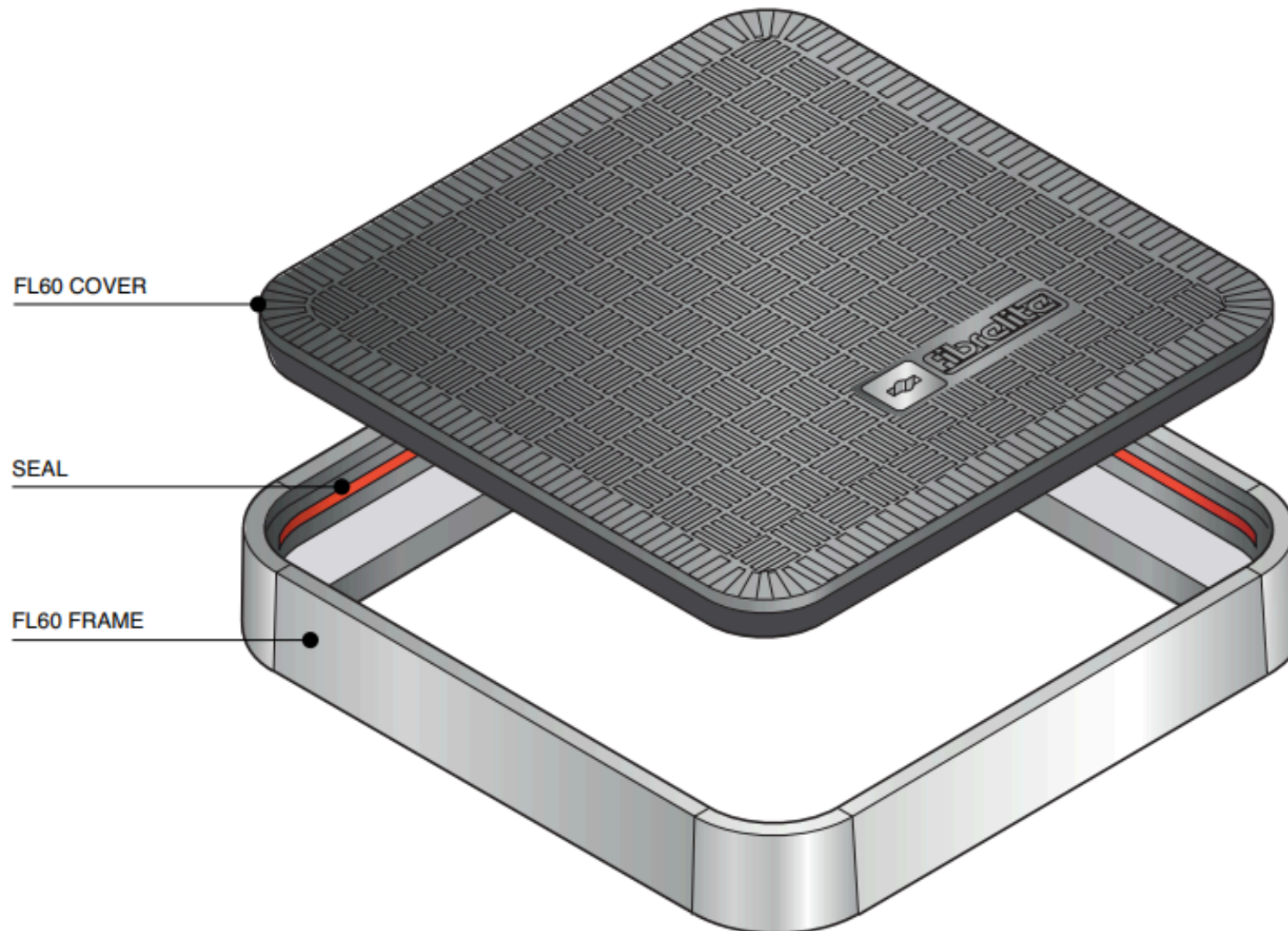
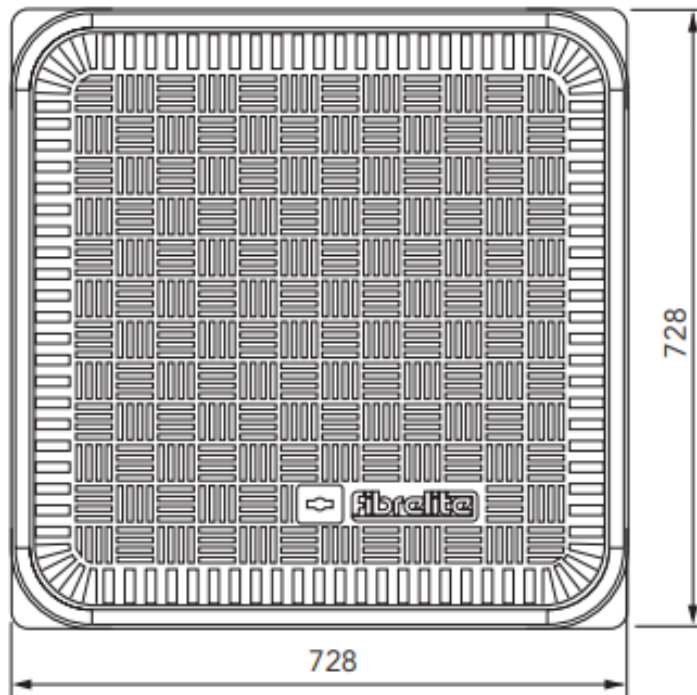
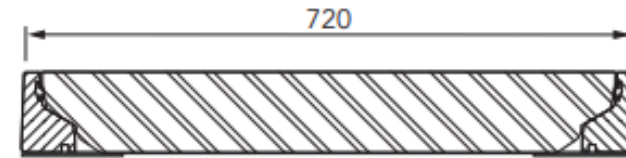
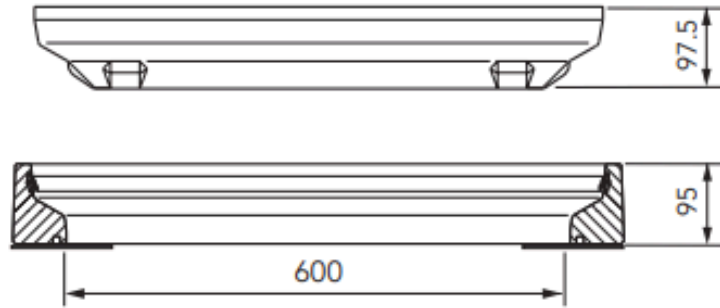


FL60





Load Rating	Cover Weight	Frame Weight
A15	10.5 Kg	11 Kg
B125	12 Kg	11 Kg
C250	20 Kg	11 Kg
D400	27 Kg	11 Kg
F900	35 Kg	11 Kg

CONCRETE

VERY IMPORTANT

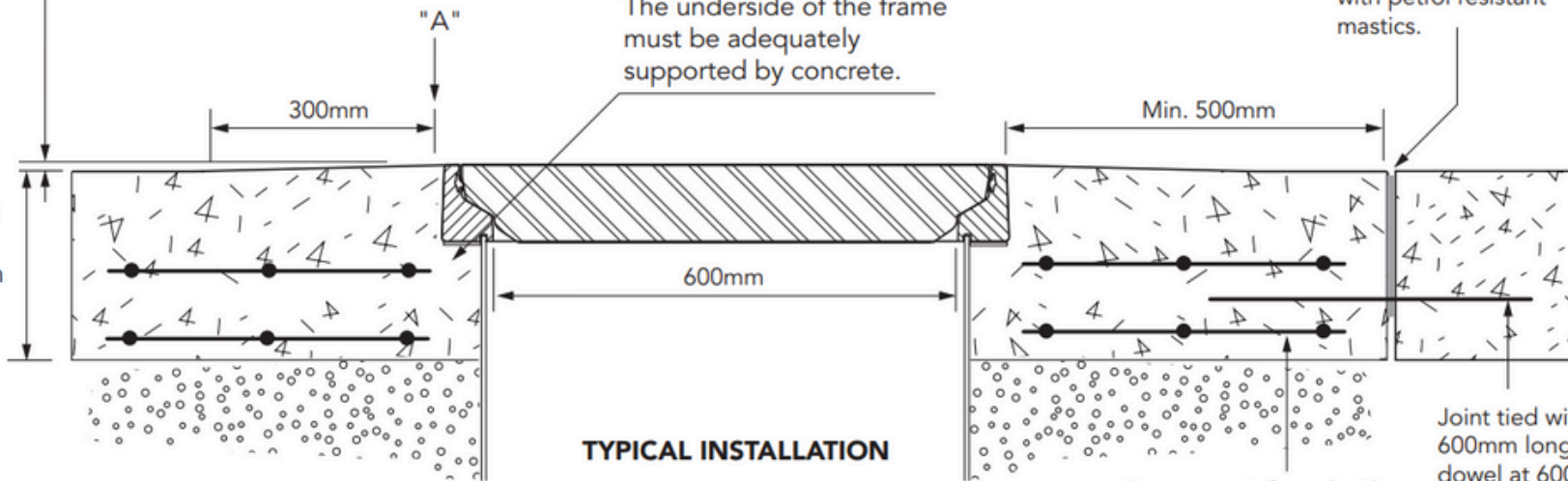
OUTER EDGE 'A' OF FRAME SET 5MM ABOVE GENERAL FORECOURT AREA WITH CONCRETE RAMPED AWAY OVER 300MM

VERY IMPORTANT

The underside of the frame must be adequately supported by concrete.

Expansion joint filled with petrol resistant mastics.

Minimum 200mm
Maximum 350mm



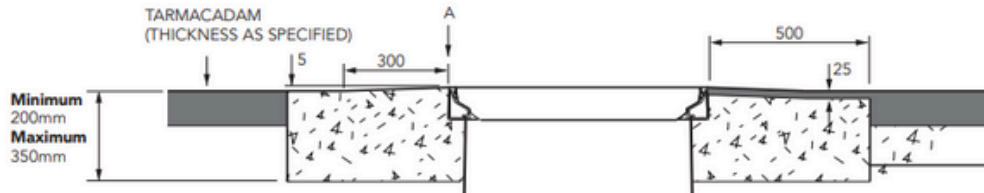
TYPICAL INSTALLATION

Concrete reinforced with 2 layers of reinforcement mesh.

Joint tied with 600mm long x 12mm dowel at 600mm c/c. Half bonded.

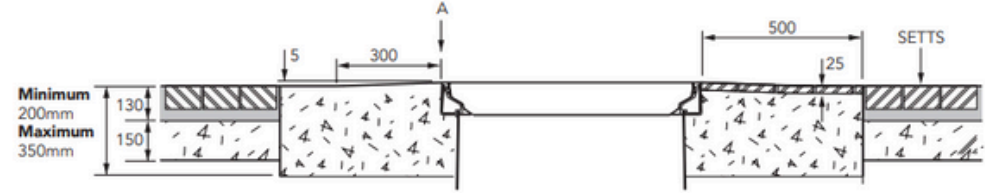


TARMACADAM



Minimum 200mm
Maximum 350mm

SETTS



Minimum 200mm
Maximum 350mm