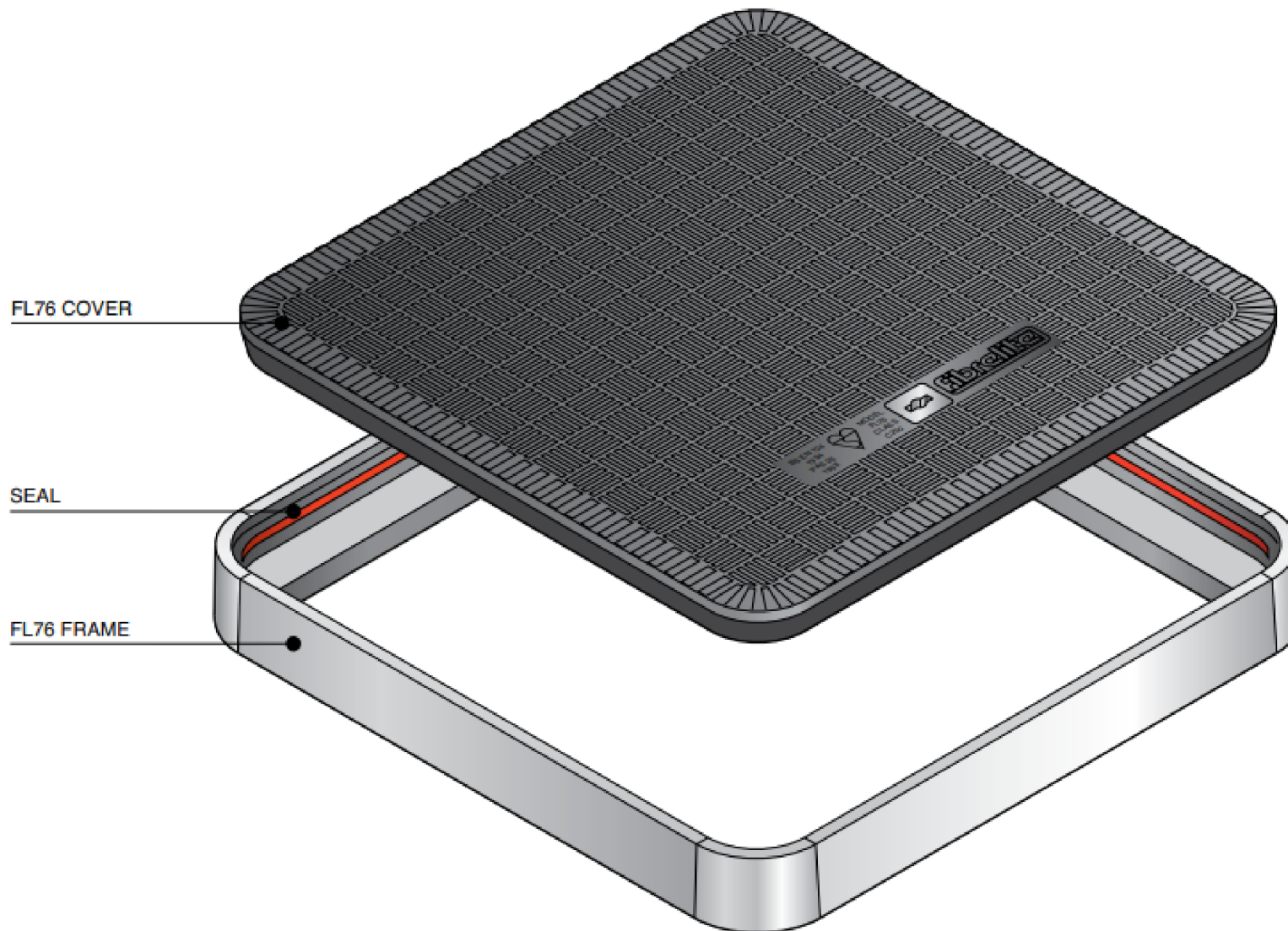
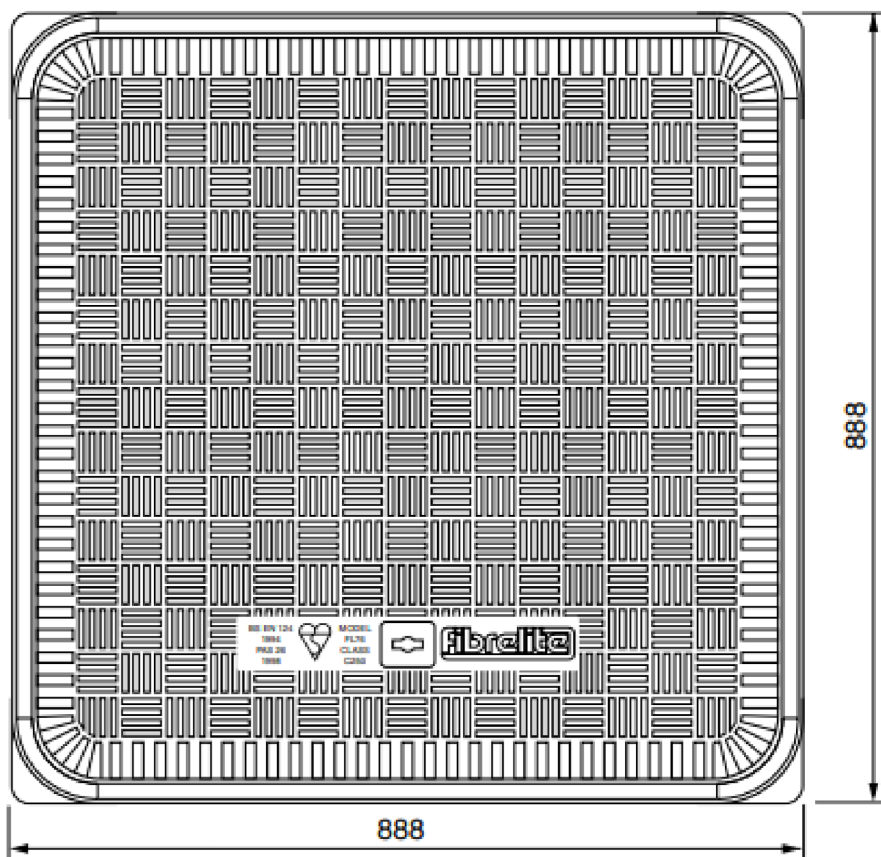
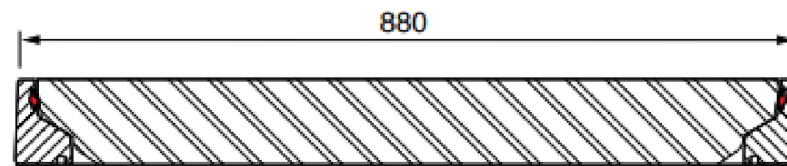
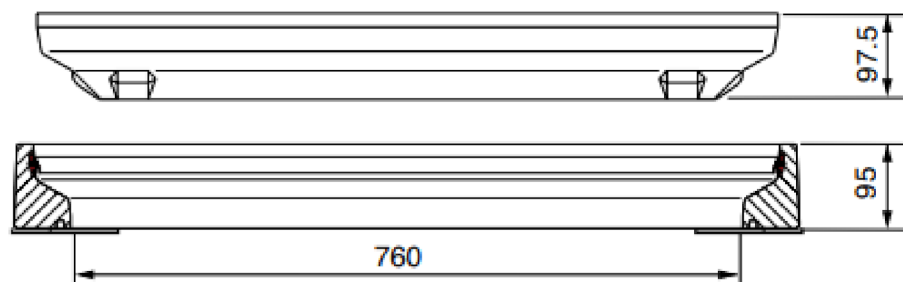


FL76

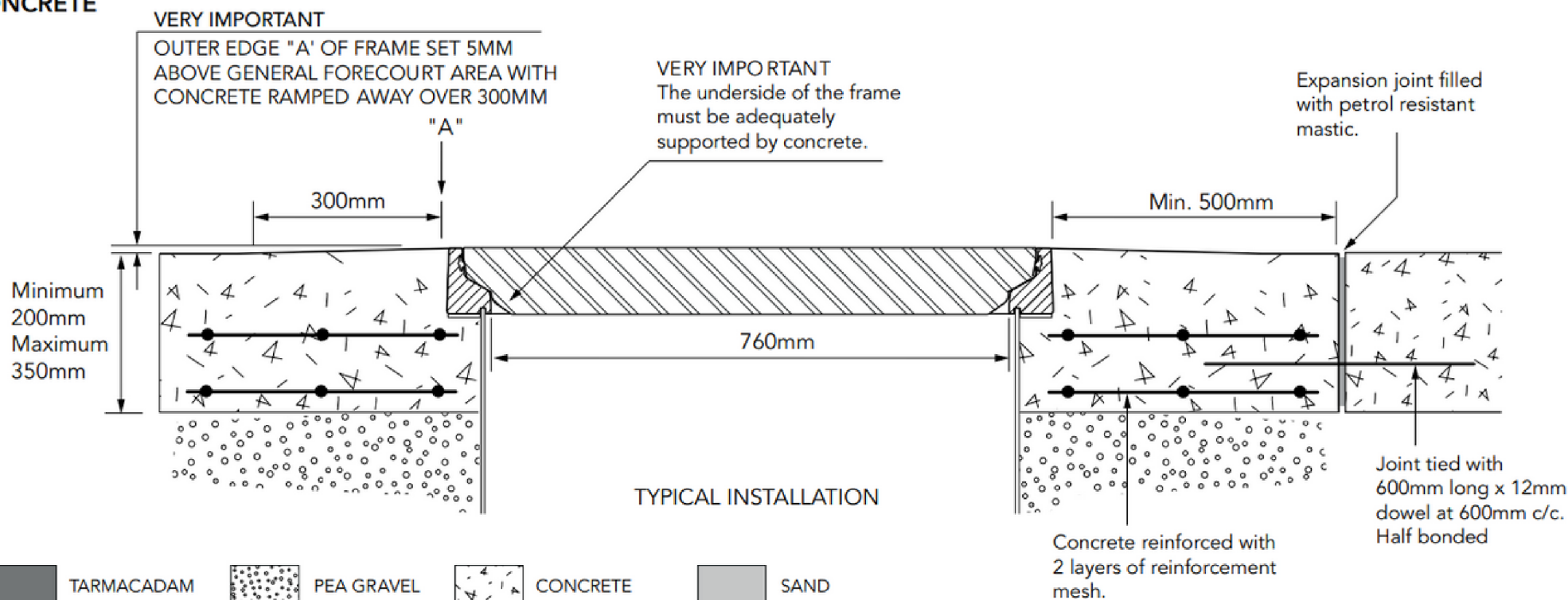




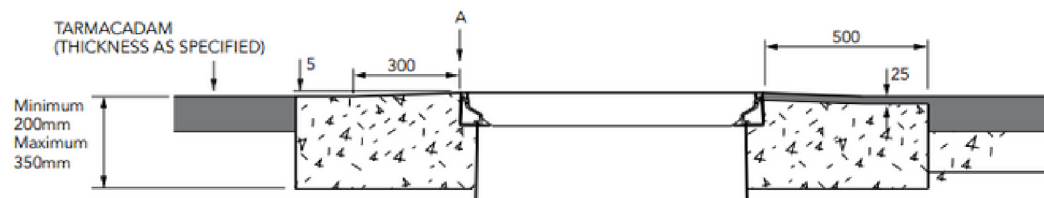
Load Rating	Cover Weight	Frame Weight
A15	16 Kg	9 Kg
B125	20 Kg	9 Kg
C250*	31.5 Kg	12 Kg
TCR	31.5 Kg	12 Kg
D400	43 Kg	12 Kg
Airport	41 Kg	13.3 Kg
F900	52 Kg	16 Kg

* Awarded British Standard Kite Mark

CONCRETE



TARMACADAM



SETTS

